

COMPACT, COMPLETE, CONVENIENT

# DOWNFLO® EVOLUTION PRE-ASSEMBLED SMALL



Donaldson®  
FILTRATION SOLUTIONS



Smart Collector  
Powered by iCue™ Technology



# PRODUCTIVITY MEETS PRACTICALITY

Today's advanced manufacturing tools operate in faster-paced environments, which is great for helping you meet your production goals, but can add a lot of dust to your work environment.

The Downflo® Evolution Pre-assembled Small (DFPRE 2) was designed as a packaged system to answer customer demand for a compact, convenient, and reliable filtration system that can help maximize production uptime. The result is an easy-to-install dust collector with unrivaled filtration performance – delivering operational confidence.

Help protect your people and productivity – while keeping your operation moving at top speed – with effective and reliable dust management solutions that can deliver:



Environmental  
Health & Safety



Maximized  
production  
uptime



Economical  
cost of  
ownership



Packaged and  
easy installation

## APPLICATIONS

**Donaldson offers effective dust control solutions for your continuous manufacturing processes:**

- Metal Manufacturing
- Chemical & Petroleum Products
- Pharmaceutical
- Metal Grinding
- Plasma Cutting
- Laser Cutting
- Welding
- Abrasive Blast
- Plastic





## INNOVATIONS IN DUST CONTROL

For more than 40 years, Donaldson has been at the forefront of cartridge filter collection and has developed game-changing dust control solutions that improve performance, convenience, and total cost of ownership. These advancements have resulted in next-generation dust control systems, including the DFPRE series of collectors.

### Smart Collector

Equipped with iCue™ Connected Filtration Technology, your Smart Collector monitors your equipment and provides operational insights through automated alerts and a dashboard that's accessible from your computer or smart device.

### Flameless Vent

Allows the equipment to be installed inside your facility.

### Sealed Drum Kit

Eliminates the need for a costly rotary airlock between the collector hopper and the drum for most combustible dust applications.

### Spark Reducing Inlet

When used as part of an overall fire mitigation strategy, it reduces the risk of a spark entering the dust collector by directing the airstream through a tortuous path.\*

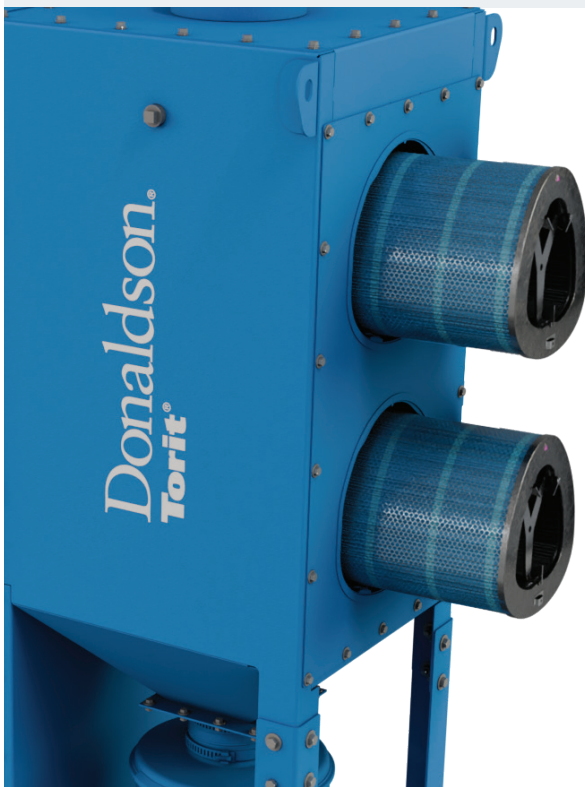
\* Intended for use in applications with an increased fire risk and can be used as part of an overall fire mitigation strategy. No single spark mitigation device, including the Spark Reducing Inlet, can guarantee the elimination of all sparks and ignition sources from entering the dust collector. Please contact your Donaldson sales representative to discuss additional fire mitigation strategies as necessary.

# THE DFPRE IS PACKAGED TO PERFORM

With its small footprint, high-efficiency cartridge filters, and easy-to-connect ducting, the DFPRE 2 is an effective solution for organizations looking for maximum performance and production uptime from an industry leader.

## EASY INSTALLATION

- Ships pre-assembled for streamlined set-up
- Pre-wired fan and controls
- Includes protective junction box
- Compact design provides simple handling
- Clamp-together Easy-Duct™ connections don't require special tools



## ADAPTABILITY

Suitable for a wide range of applications with options including:

- HEPA afterfilter to achieve higher filtration efficiency: 99.97% on 0.3-micron particles
- Explosion protection to provide a complete and robust package for a variety of combustible dusts

## MAXIMIZED PERFORMANCE

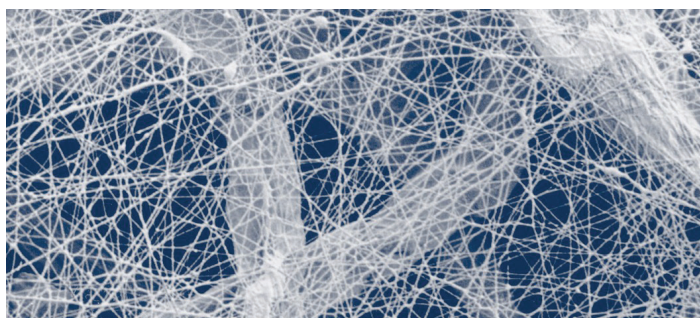
- Enhanced airflow design directs incoming air to the inlet dropout plate for reduced filter loading
- Enhanced media surface area and pulse cleaning adds to filter life
- Increased airflow per cartridge results in a lower cost per CFM



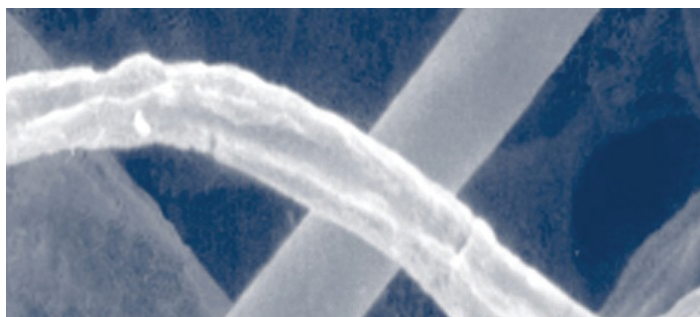
# INDUSTRY-LEADING FILTRATION DESIGN

Our unique triangular cartridge filters – made with industry-leading Ultra-Web® fine fiber filtration technology – have more filter media at the bottom of the cartridge element so pulse-cleaning energy directs the ejected dust toward its ultimate destination – the containment vessel.

Ultra-Web filtration technology features a layer of fine fibers (0.2 - 0.3 microns in diameter) on the surface of the media to capture sub-micron contaminants. This makes the dust cake come off easily during automated cleaning cycles, ensuring cleaner air longer.



**Fine Fiber Media (600px)** – Fine fiber surface loading technology is available in all Ultra-Web and Fibra-Web® filter cartridges.



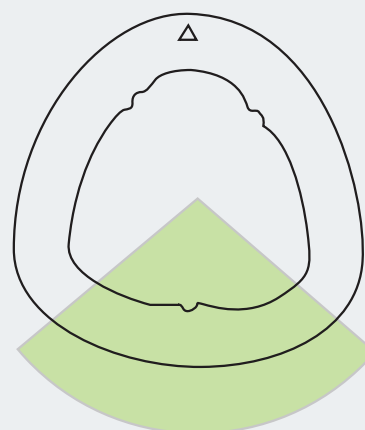
**Commodity Filter Media (600px)** – Conventional media has spaces of up to 60 µm between fibers, allowing dust to become deeply embedded.

With its more efficient cartridge filters and advanced downward airflow, the DFPRE 2 requires fewer filters for the same filtration power, resulting in:

- Reduced filter replacement costs
- Reduced maintenance
- Reduced floor space requirements

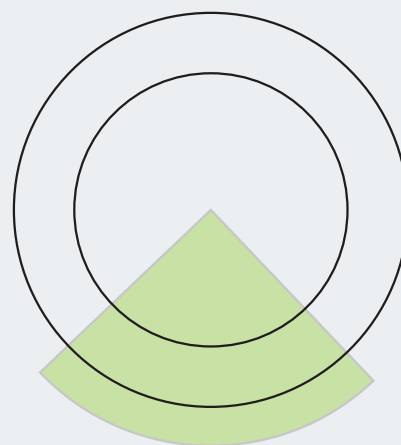
**Triangular filters are specifically designed for improved pulse cleaning, increased airflow per cartridge, and superior performance.**

## Triangular Filter



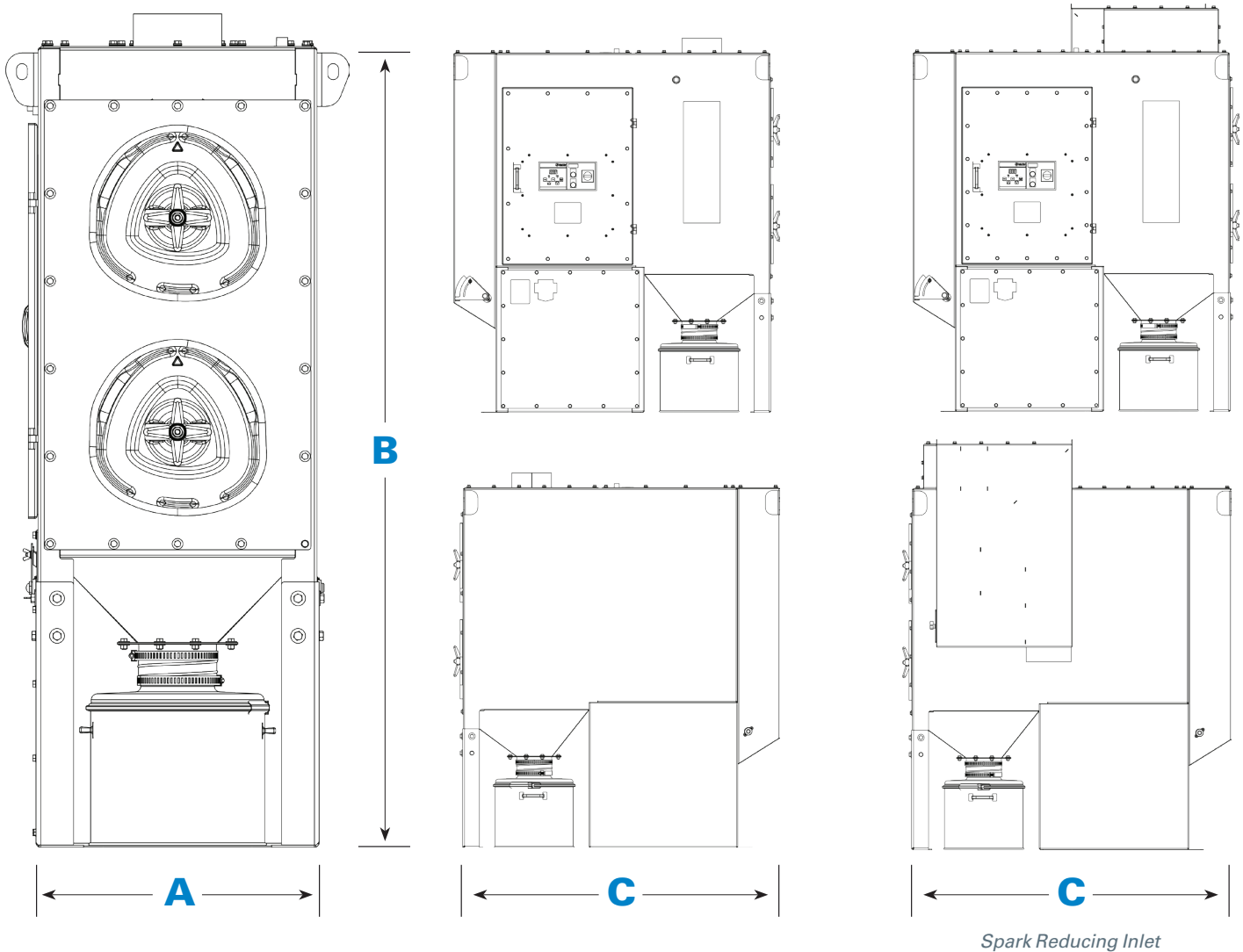
27% of Total Filter Media

## Round Filter



25% of Total Filter Media

# RIGHT-SIZE YOUR DUST CONTROL SYSTEM



Model	Number of filter elements	Number of valves	Dimensions (mm)*			Weight (kg)**
			Width A	Height B	Depth C	
DFPRE 2	2	2	32" (812.8)	78" (1,981.2)	68" (1,727.2)	1,009 lbs. (457.7)
DFPRE 2 Spark Reducing Inlet	2	2	41" (1,041.4)	85" (2,159)	68" (1,727.2)	1,180 lbs. (535.2)

\* Dimensions & Weights depend on the options chosen.

\*\* Weights include filter cartridges and are for collectors prior to first use, i.e., with no dust collected. Excludes shipped loose items.

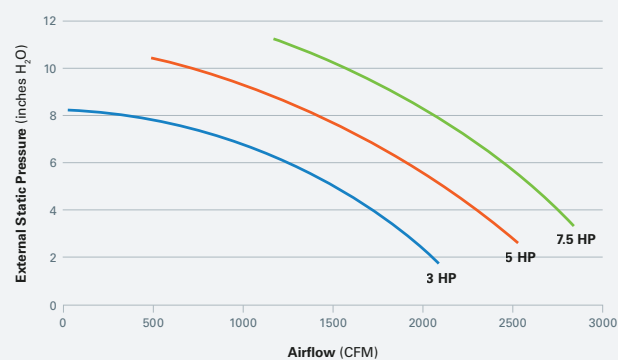


# FEATURES AND OPTIONS

Collector Features	Std	Opt
Mild Steel Construction	X	
Filter Cleaning System	X	
Quick Removal Access Covers	X	
8" or 10" Straight Edge Inlet	X	
8" or 10" Easy-Duct Inlet		X
Extraction Arms		X
5 HP Fan	X	
3 or 7.5 HP Fan		X
Outlet Airflow Damper	X	
HEPA/ASHRAE Afterfilter		X
Spark Reducing Inlet		X
Explosion Protected Models		X
Flameless Vent		X
Sprinkler Taps	X	
Sprinkler Heads		X
Bag-Out Kit (Filter)		X
10-Year Warranty	X	
Hopper Discharge	Std	Opt
10 gal Dust Container	X	
25 gal Dust Container		X
5 gal Sealed Drum Kit		X

Paint System	Std	Opt
Prime Coated Interior	X	
Textured Multi-Coat Paint Finish	X	
Custom Colors		X
Premium Duty Finish		X
Epoxy Coating		X
Electrical Controls, Gauges & Enclosures	Std	Opt
Integrated Control Box with Delta P and Motor Starter	X	
Remote Mounted Controls		X
Donaldson's iCue™ Connected Filtration Technology	X	

## Fan Options



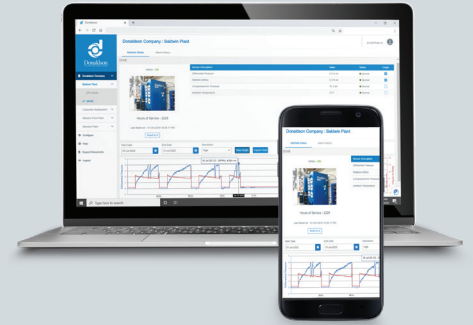
Fan curve represents standard configuration. Spark Reducing Inlet or HEPA afterfilters will impact airflow.



# SMART COLLECTOR. SMART CHOICE.

Choosing a Donaldson Smart Collector means choosing an industry-leading dust, fume, and mist collection solution for your operation and employees.

Smart Collectors come equipped with Donaldson's iCue™ Connected Filtration Technology. The system tracks your equipment, providing real-time data and analytics to help maximize uptime, increase maintenance efficiency, and manage your operation's critical compliance data. Our industry professionals, extensive product portfolio, and outstanding service and support can help ensure your Smart Collector will always be a Smart Choice.



**UNPARALLELED  
PERFORMANCE**



**INNOVATIVE FILTER  
MEDIA TECHNOLOGY**



**INTELLIGENT  
ENGINEERING**



**Smart Collector**  
Powered by iCue™ Technology



Donaldson.

Donaldson Company, Inc.  
Minneapolis, MN  
[donaldson.com](http://donaldson.com) • [shop.donaldson.com](http://shop.donaldson.com)

**North America**  
Email: [donaldsontorit@donaldson.com](mailto:donaldsontorit@donaldson.com)  
Phone: (USA) +1-800-365-1331

**Latinoamerica**  
Email: [industrialair@donaldson.com](mailto:industrialair@donaldson.com)  
Phone: +52-449-300-2442  
Toll Free: (CO) (57) 601-580-1611  
(CL) +800-914-544 • (PE) +800-712-10  
(BR) +55 (11) 99707-6689

**China**  
Email: [info.cn@donaldson.com](mailto:info.cn@donaldson.com)  
Phone: +86-400-921-7956

**Donaldson Europe B.V.**  
Email: [IAF-europe@donaldson.com](mailto:IAF-europe@donaldson.com)  
Phone: +32-16-38-3811

**India**  
Email: [info.difs@donaldson.com](mailto:info.difs@donaldson.com)  
Phone: +91-124-4807-400 • +18001035018

**Australasia**  
Email: [marketing.australia@donaldson.com](mailto:marketing.australia@donaldson.com)  
Phone: +61-02-4350-2066  
Toll Free: (AU) +1800-345-837 • (NZ) +0800-743-387

**Korea**  
Email: [contactus.kr@donaldson.com](mailto:contactus.kr@donaldson.com)  
Phone: +82-2-517-3333

**South Africa**  
Email: [SAMarketing@donaldson.com](mailto:SAMarketing@donaldson.com)  
Phone: +27-11-997-6000

**Southeast Asia**  
Email: [IAF.SEA@donaldson.com](mailto:IAF.SEA@donaldson.com)  
Phone: +65-6311-7373

**Japan**  
Email: [jp-ndl.ifsweb@donaldson.com](mailto:jp-ndl.ifsweb@donaldson.com)  
Phone: +81-42-540-4114



**IMPORTANT NOTICE:** Many factors beyond the control of Donaldson can affect the use and performance of Donaldson products in a particular application, including the conditions under which the product is used. Since these factors are uniquely within the user's knowledge and control, it is essential the user evaluate the products to determine whether the product is fit for the particular purpose and suitable for the user's application. All products, product specifications, availability and data are subject to change without notice, and may vary by region or country.

F119558 ENG (04/24) ©2024 Donaldson Company, Inc. All rights reserved. Donaldson Company, Inc. reserves the right to change or discontinue any model or specification at any time and without notice.